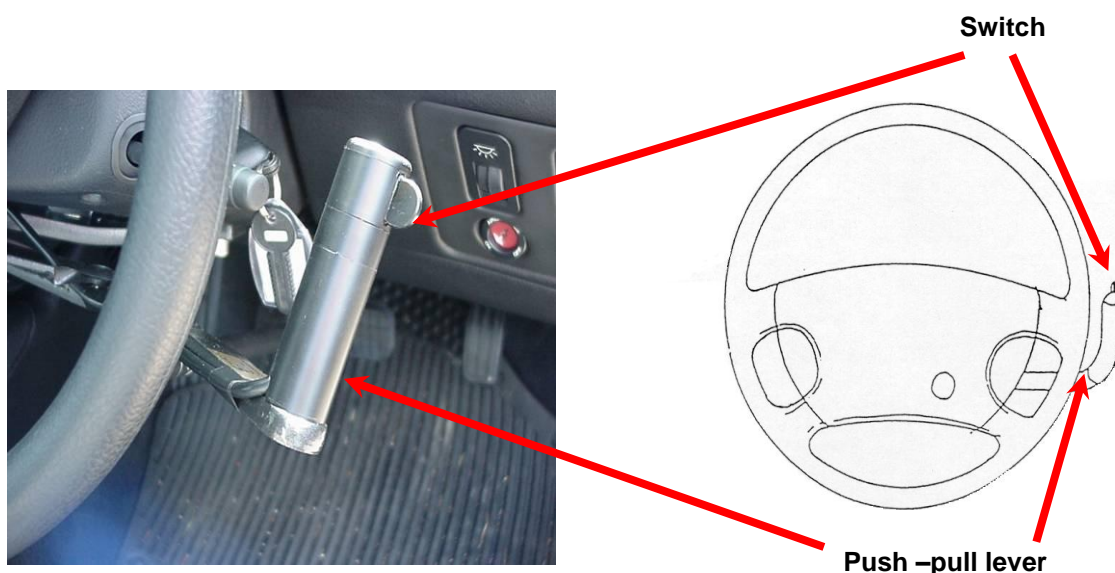




Forum of Mobility Centres

COMBINED PUSH-PULL ACCELERATOR AND BRAKE

Adaptation Guide Number 2



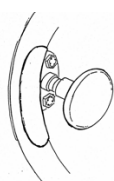
The combined push-pull brake and accelerator lever is one of a range of hand control adaptations that are available when a person is unable to use their feet to operate the standard pedals. The lever is usually positioned behind and to the right of the steering wheel, connected by rods/cables to the accelerator and brake pedals and operated by the right hand. In certain circumstances the lever can be fitted to the left of the wheel for left hand operation. This lever is **pulled to accelerate** and **pushed away to brake**. A switch or switches may be incorporated onto the lever and conveniently positioned to allow the fingers/thumb of the right hand to operate indicators, horn, lights etc.

This adaptation can be fitted to most vehicles but the system is designed primarily for a vehicle with automatic transmission and for a person who is unable to use or has difficulty using their legs to operate the pedals for accelerating and braking. It is

strongly recommended that these controls are fitted to a vehicle with power assisted steering.

Points to consider

- Fitting of hand controls should not affect the operation of the pedals if another person wishes to drive the vehicle in a standard way. However, when a person is using hand controls when driving, a pedal guard is recommended to prevent accidental operation of the pedals or the feet from slipping underneath the accelerator and brake pedals. These can be removed easily when the car is driven with standard foot controls.



- Push pull hand controls can be used in conjunction with a steering spinner which is a knob attached to the steering wheel to assist with a one armed action of turning. The use of a push pull hand control, particularly when using a steering wheel spinner, may have an impact on your stability while driving. You may need to sit closer to the steering wheel if you are steering with one hand. Ensure that you are sitting in a good position in relation to the controls and that you have adequate support from the car seat.
- A person using a push-pull hand control should ensure that they have sufficient upper limb strength and range of movement to pull the lever towards them to accelerate and to push the lever away for braking while retaining their seating position.
- The push-pull hand controls may have an impact on the knee/leg space when entering or leaving the vehicle. This should be taken into consideration when choosing a vehicle. Check whether the rods attached to the pedals are obtrusive and/or covered by a guard. Ensure that there is enough room for a person's legs without them knocking against the rods and that a driver using the normal controls can do so safely.
- The installation of push-pull hand controls will require the steering wheel or steering column to be in a fixed position. Any adjustability to the steering wheel or column will be lost.
- The shape of the lever and padding may affect the comfort and length of time that the lever can be used.
- Consideration needs to be given to the position of the lever in relation to the steering wheel (when nearness of the lever is important if using a thumb locked

over the steering wheel). Appropriate positioning of the lever can enable the user to hook his/her thumb over the steering wheel when accelerating.

- As constant use of the arms to operate all the car controls can be tiring, a cruise control system may help reduce this problem on longer journeys. However, you need to ensure you can operate this while maintaining control of the vehicle.
- To determine if this adaptation is suitable for your particular needs please contact the Forum of Mobility Centres to discuss an assessment on 0800 5593636, email: enquiries@mobility-centres.org.uk and the website is www.mobility-centres.org.uk
- It is recommended that a person receives tuition using a hand control before driving on the public highway. There is a Register of Driving Instructors for Disabled People and details of instructors in each county are available on 0800 5593636.

Whilst the Forum of Mobility Centres has taken every care to ensure the information provided in this document is accurate, the Forum of Mobility Centres does not endorse or make any representations as to the quality, cost or availability of the products, services, and suppliers listed here. Forum of Mobility Centres cannot in any circumstances accept liability of any kind arising out of or in connection with the use of this information or any reliance placed on it by any person.

May 2007